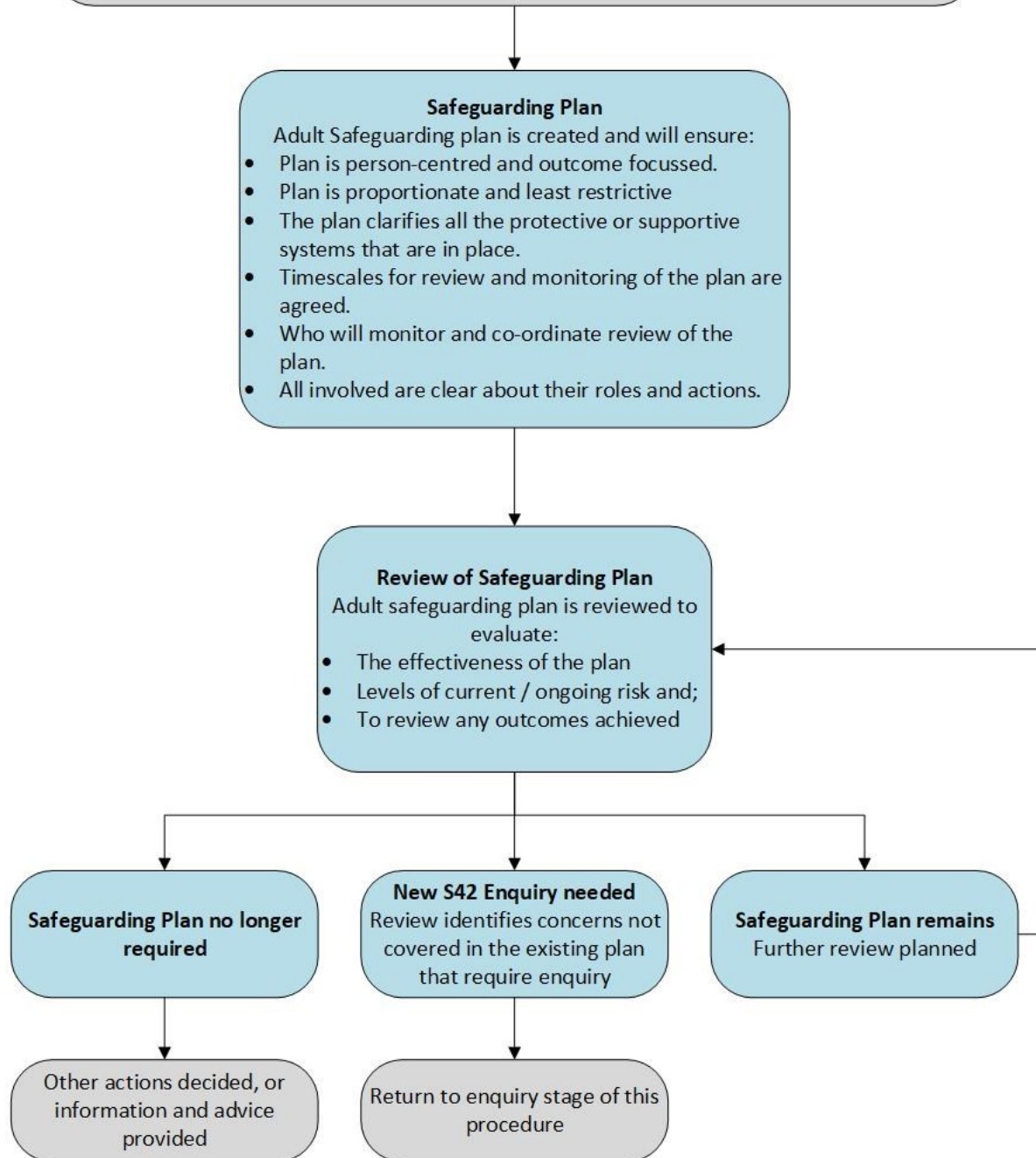


Appendix 6.1 – Safeguarding Plan Flow Chart

A safeguarding plan will usually be required where the risk of abuse or neglect cannot be managed appropriately or adequately by other processes and/or the risk of abuse is, for example: ongoing, complex, unpredictable, the risk of harm to the adult or others is significant, other factors such as coercion, undue influence, or duress add to the complexity and uncertainty of the risk



Adapted from the West Midlands Policies and Procedures