



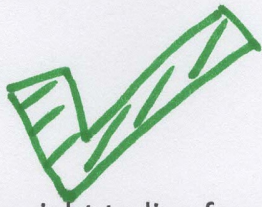
Staffordshire and Stoke-on-Trent
Adult Safeguarding Partnership Board

Abuse must stop



Annual Report

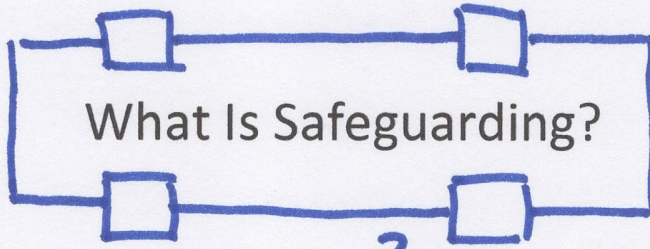
2020-2021



The right to live free from neglect



The right to live safely



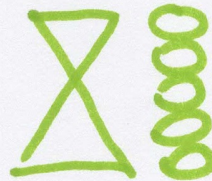
Well-being is promoted



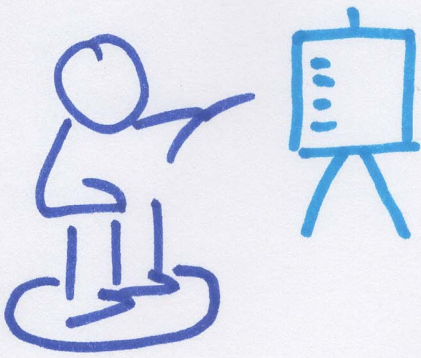
Being listened to



People & organisations work together to stop harm



Making choices

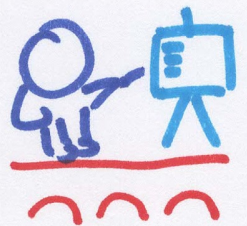


Safeguarding Principles

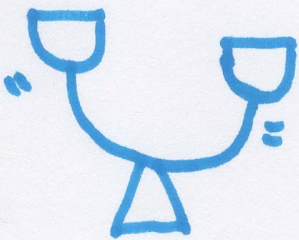
Partnership



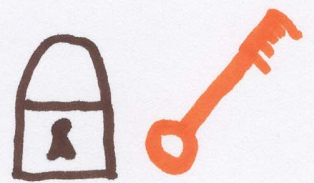
Accountability



Prevention



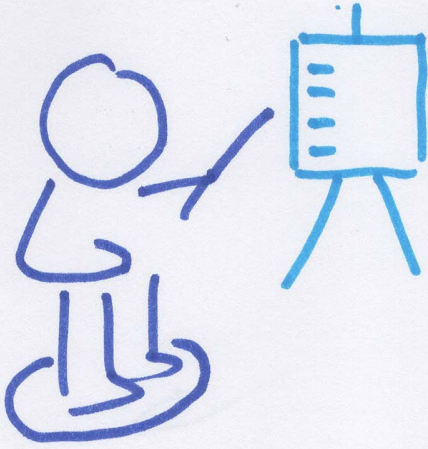
Proportionality



Protection



Person-led & empowerment



Main aims of the
SSASPB

- Publish a plan with goals and how they will be achieved

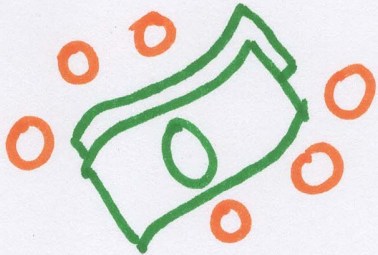
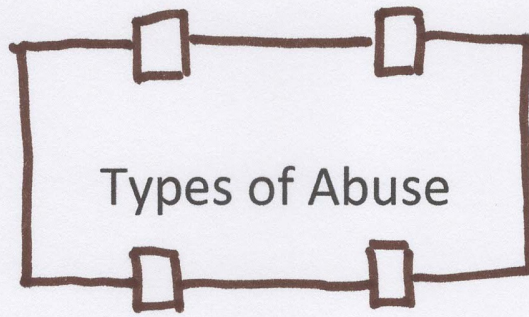


- Publish an annual report on what the board has done



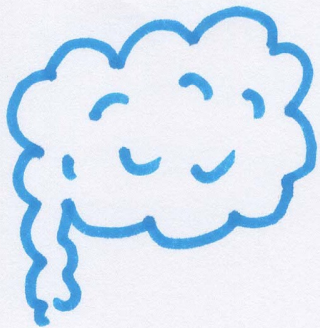
- Do a review when someone has come to harm and it meets criteria





FINANCIAL – including theft, fraud, scamming, coercion, etc

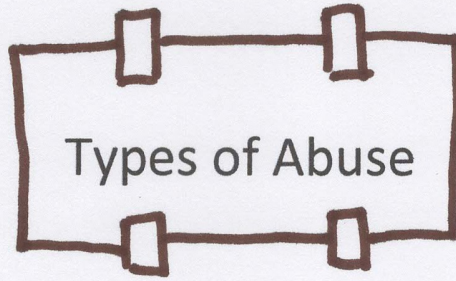
PHYSICAL – including assault, hitting, slapping, pushing, misuse of medication, and many more



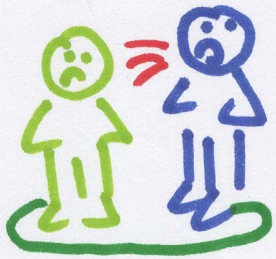
PSYCHOLOGICAL – including emotional abuse, humiliation, harassment, cyber bullying, isolation, deprivation of contact, etc

DOMESTIC – including sexual, assault, financial, psychological and honour based



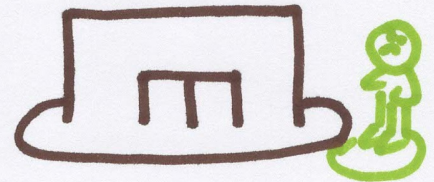


MODERN SLAVERY – forced labour, trafficking, servitude, coercion, deceit, inhumane treatment



DISCRIMINATORY – slurs, harassment, poor treatment due to race, religion, gender, etc

ORGANISATIONAL – neglect or poor care within a care setting



NEGLECT – ignoring physical or medical needs. Withholding the necessities of life e.g – medication, food, heating, etc. Can be self-neglect also

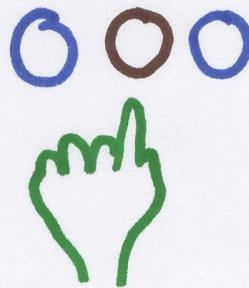




Vision For Safeguarding in Staffordshire & Stoke-On-Trent

Adults with care and support needs

Are supported to choose



How to live their life in a place



Where they feel safe and secure



And free from neglect and abuse





How did we do in 2020-2021?

Safeguarding concerns

12,176
Staffordshire

4,195
Stoke-on-Trent



57%
Staffordshire



49%
Stoke-on-Trent



Over 75 years old

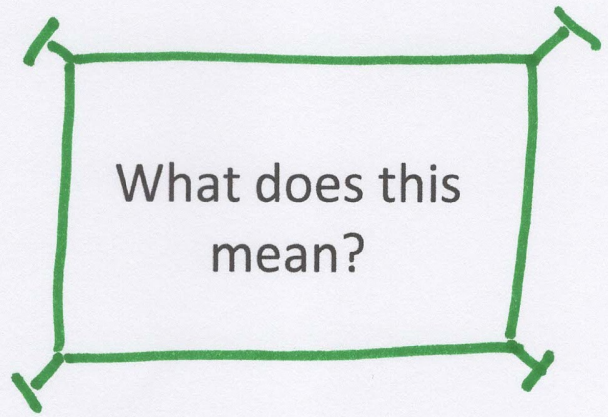
36% - Neglect
Staffordshire



Most prevalent
types of abuse



58% - Neglect
Stoke-on-Trent



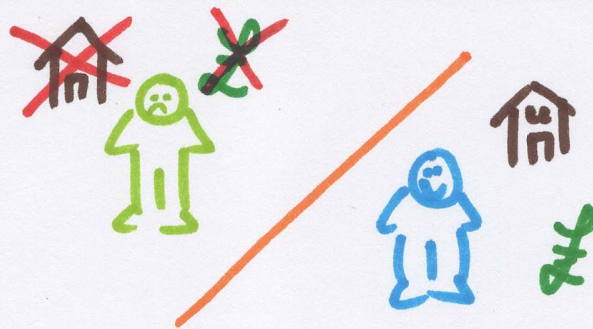
In 21/22 Staffordshire had a higher number of referrals made



Over half referrals made in both areas were for older adults over the age of 75 years



In both areas the most common form of abuse were acts of omission or neglect



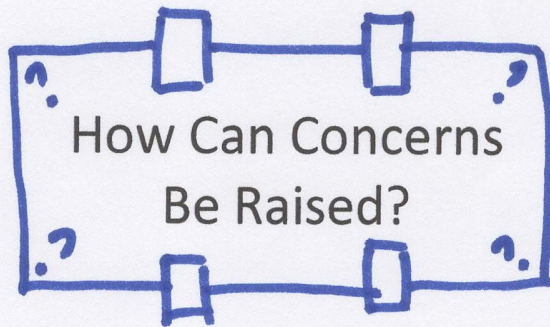
In both areas most abuse that occurred took place in the individual's own home



Criminal investigation

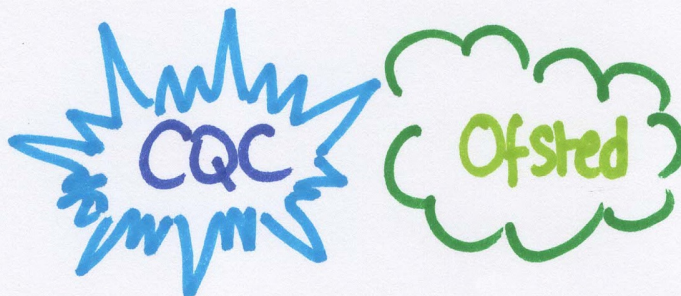


Section 42 enquiries



Reports from the public

Disciplinary investigations



Regulatory action or quality assurance monitoring



MILESTONEZ
MOTIVATION, EMPOWERMENT AND INDEPENDENCE ARE OUR KEY TO YOUR SUCCESS!

This document has been designed and produced by Milestonez UK with their members, part of the Rockspur CIC group - a user led, not for profit organisation for adults with care and support needs

01/03/2022

